

**BULLOO SHIRE COUNCIL ROAD CONDITION REPORT**

Page 1

As at 3.00pm 17/01/2024

Next Update issued when conditions change

ROAD NAME	RACQ FLAG	ROAD NO	MAIN/SHIRE ROAD	STATUS	COMMENTS
Bulloo Developmental Road Thargomindah – Shire Boundary 110.660 – 197.900	184	94A	Main Road	OPEN	* FLOOD TRUCK IN OPERATION REFER TO LAST PAGE FOR CONDITIONS REGRAVING ROAD CLOSURE
Bulloo Developmental Road Thargomindah – Bundeena 0.000 – 162.650	187	94B	Main Road	OPEN	DRIVE TO PREVAILING CONDITIONS
Cooper Developmental Road Bundeena – Shire Boundary 142.320 – 185.710	185	79A	Main Road	OPEN	DRIVE TO PREVAILING CONDITIONS
Quilpie Thargomindah Road Thargomindah to Shire Boundary	183	7003	Main Road Sealed/ Unsealed	OPEN	WITH CAUTION. PLEASE CONTACT QUILPIE SHIRE FOR THEIR ROAD REPORT
Eulo – Hungerford Road Hungerford – Shire Boundary Hungerford T/Section – Paroo Crossing	284	7001	Main Road Unsealed Main Road	OPEN	WITH CAUTION. CLOSED AT PAROO CROSSING
Hungerford Road Thargomindah – Kilcowera Kilcowera – Hungerford	335	1	Shire Road Unsealed Unsealed	OPEN OPEN	WITH CAUTION CLOSED AT PAROO CROSSING
Hamilton Gate Road Hungerford Rd – Hamilton Gate	335	6	Shire Road Unsealed	OPEN	4WD ONLY WITH CAUTION
Hungerford Crossing (By Pass Rd near Thargomindah)		33	Shire Road Unsealed	CLOSED	UNTIL FURTHER NOTICE

**BULLOO SHIRE COUNCIL ROAD CONDITION REPORT**

Page 2

As at 3.00pm 17/01/2024

Next Update issued when conditions change

Bulloo Downs Road Thargomindah – Thyangra Thyangra – Bulloo Downs Bulloo Downs – Naryilco	348	44	Shire Road Unsealed Unsealed	CLOSED CLOSED CLOSED	4WD ONLY WITH CAUTION
Tickalara Road Bulloo Downs – Tickalara Tickalara – Naryilco	348	8	Shire Road Unsealed	CLOSED CLOSED	4WD ONLY WITH CAUTION
Wompah Gate Road Tickalara – Wompah Gate	335	9	Shire Road Unsealed	CLOSED	4WD ONLY WITH CAUTION
Soonah Crossing Road		5	Shire Road Unsealed	CLOSED	4WD ONLY WITH CAUTION
Autumnvale Road		46	Shire Road Unsealed	CLOSED	4WD ONLY WITH CAUTION
Black Gate Road		42	Shire Road Unsealed	OPEN	WITH CAUTION
Besm Road		29	Shire Road Unsealed	OPEN	WITH CAUTION
Yenloora Road		27	Shire Road Unsealed	CLOSED	WITH CAUTION
Warri Gate Road Noccundra – Naryilco Naryilco – Cameron Corner Naryilco – NSW Boarder	186	2	Shire Roads Unsealed	OPEN CLOSED OPEN	WITH CAUTION DUE TO RAIN WITH CAUTION
Innamincka Road Jackson – Naccowlah Naccowlah – Ballera Ballera – Nappamerrie Nappamerrie – SA Border	301	12	Shire Road Sealed Sealed Sealed/ Unsealed	OPEN OPEN	DRIVE TO PREVAILING CONDITIONS



BULLOO SHIRE COUNCIL ROAD CONDITION REPORT

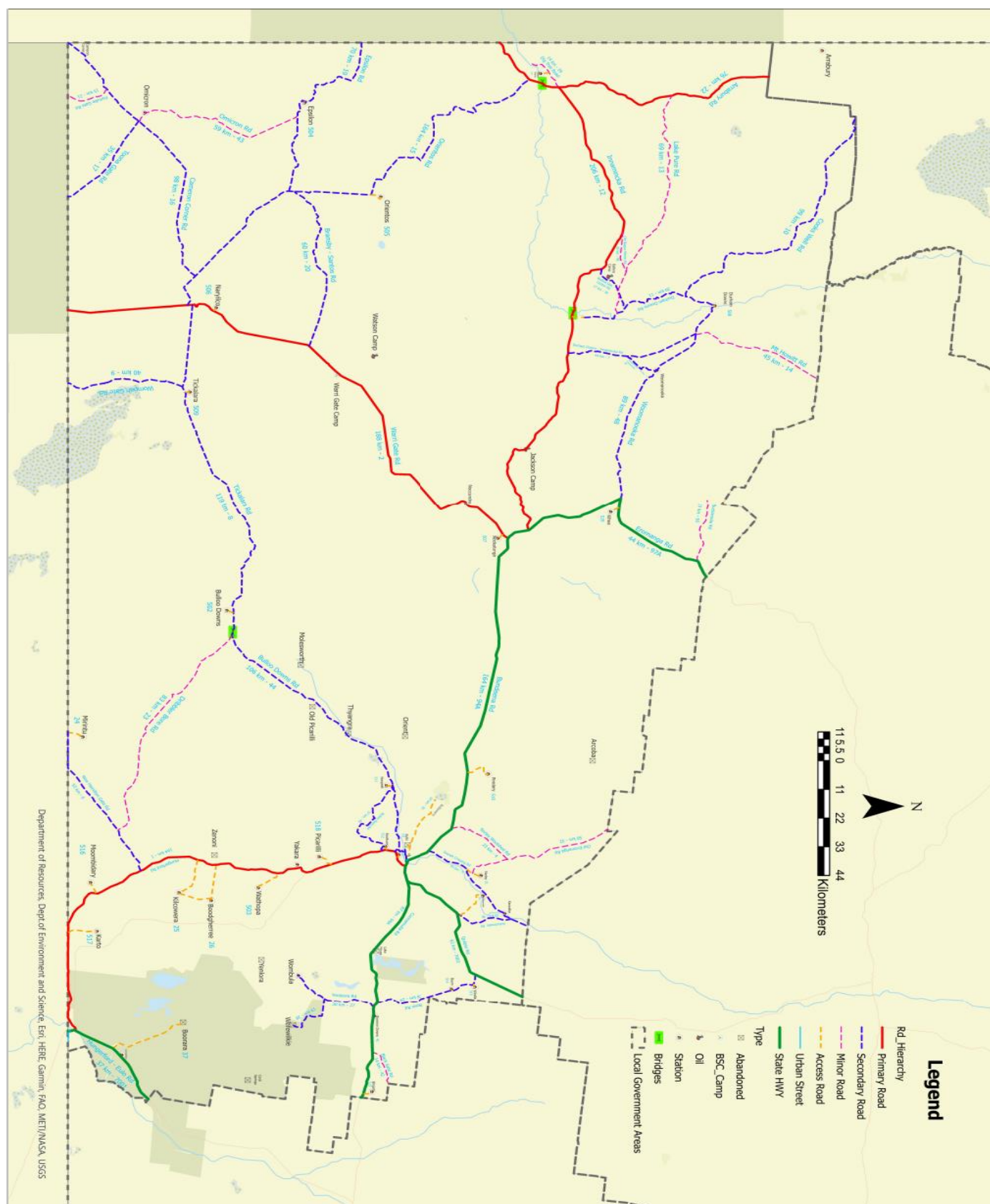
Page 3

As at 3.00pm 17/01/2024

Next Update issued when conditions change

Woomanooka Road Bundeena – Woomanooka Woomanooka – Durham Downs	335	48	Shire Road Unsealed	OPEN OPEN	DRIVE TO PREVAILING CONDITIONS DRIVE TO PREVAILING CONDITIONS
Durham Downs Road Ballera - Durham Downs Station Durham Downs Stn -	334	11	Shire Road Sealed/ Unsealed	OPEN	DRIVE TO PREVAILING CONDITIONS
Cooks Well Road	335	10	Shire Road Unsealed	OPEN	DRIVE TO PREVAILING CONDITIONS
Orientos Road Nappa Merrie – Orientos Stn Orientos Stn – Cameron Corner Cameron Corner – Warri Gate Rd	335	15	Shire Road Unsealed	CLOSED CLOSED CLOSED	WATER OVER ROAD WATER OVER ROAD WATER OVER ROAD
Cameron Corner Road Warry Gate Rd – Omicron Rd Omicron to Cameron Corner	335	16	Shire Road Unsealed	CLOSED OPEN	WATER OVER ROAD WITH CAUTION
Omicron Road Omicron – Epsilon	334	43	Shire Road Unsealed	OPEN	WITH CAUTION
Toona Gate Road Cameron Corner – Border Gate	334	17	Shire Road Unsealed	OPEN	WITH CAUTION
Epsilon / Moomba Road Santos – Epsilon – S A Border	334	19	Shire Road Unsealed	OPEN	WITH CAUTION
Fortville Gate Rd Cameron Corner – Border Gate		21	Shire Road	CLOSED	DUE TO FLOOD DAMAGE
Ballera Access Road	334	30	Shire Road Sealed	OPEN	DRIVE TO PREVAILING CONDITIONS
Dig Tree Road	320	39	Shire Road Unsealed	OPEN	WITH CAUTION
Arrabury Road (to Barcoo Shire Border)	320	22	Shire Road Unsealed	OPEN	WITH CAUTION

Note: Definition of Light Vehicles is: Nothing over 5 Tonne, e.g. Car & Trailer; 4 x 4 Caravan.



*

Road Closure Water Heights

Where water crosses a road, Council recommends that you do not drive through a flooded road due to uncertainty below the water surface, there may be no road at all under the water. Flooding can wash away the entire road surface.

To minimize the impact of the flood, under certain conditions such as low flow velocity, evidence of low structural risk etc. the following heights will regulate the closure of the road for use by the following classes of vehicles:-

Small and standard vehicles:	Max 0.2m
4WD Vehicles and Light Trucks	Max 0.4m
Heavy Vehicles (Semi Trailers)	Max 0.6m
Council Flood Truck	Max 1.0m
Extreme Emergency	Max 1.2m

The road will be closed to all vehicles when the water height rises above 1.2m

Unsealed roads are to be closed for a minimum of 24 hours after 15mm of rain has fallen in the area of the road. Council staff will liaise with property owners to clarify how much rain has fallen.