

**BULLOO SHIRE COUNCIL ROAD CONDITION REPORT**

Page 1

As at 7.45am 10/07/2023

Next Update issued when conditions change

ROAD NAME	RACQ FLAG	ROAD NO	MAIN/SHIRE ROAD	STATUS	COMMENTS
Bulloo Developmental Road Thargomindah – Shire Boundary 110.660 – 197.900	184	94A	Main Road	OPEN	DRIVE TO PREVAILING CONDITIONS
Bulloo Developmental Road Thargomindah – Bundeena 0.000 – 162.650	187	94B	Main Road	OPEN	DRIVE TO PREVAILING CONDITIONS
Cooper Developmental Road Bundeena – Shire Boundary 142.320 – 185.710	185	79A	Main Road	OPEN	DRIVE TO PREVAILING CONDITIONS
Quilpie Thargomindah Road Thargomindah to Shire Boundary	183	7003	Main Road Sealed/ Unsealed	OPEN	DRIVE TO PREVAILING CONDITIONS
Eulo – Hungerford Road Hungerford – Shire Boundary Hungerford T/Section – Paroo Crossing	284	7001	Main Road Unsealed Main Road	OPEN	WITH CAUTION
Hungerford Road Thargomindah – Kilcowera Kilcowera – Hungerford	335	1	Shire Road Unsealed Unsealed	OPEN OPEN	WITH CAUTION
Hamilton Gate Road Hungerford Rd – Hamilton Gate	335	6	Shire Road Unsealed	OPEN	WITH CAUTION
Hungerford Crossing (By Pass Rd near Thargomindah)		33	Shire Road Unsealed	CLOSED	UNTIL FURTHER NOTICE



BULLOO SHIRE COUNCIL ROAD CONDITION REPORT

Page 2

As at 7.45am 10/07/2023

Next Update issued when conditions change

Bulloo Downs Road Thargomindah – Nooyeah Nooyeah – Bulloo Downs	348	44	Shire Road Unsealed Unsealed	OPEN OPEN	OPEN WITH CAUTION OPEN WITH CAUTION
Tickalara Road Bulloo Downs – Tickalara Tickalara – Naryilco	348	8	Shire Road Unsealed	CLOSED	UNTIL FURTHER NOTICE
Wompah Gate Road Tickalara – Wompah Gate	335	9	Shire Road Unsealed	CLOSED	DUE TO RAIN
Soonah Crossing Road		5	Shire Road Unsealed	OPEN	LOCAL TRAFFIC ONLY WITH CAUTION
Autumnvale Road		46	Shire Road Unsealed	OPEN	WITH CAUTION
Black Gate Road		42	Shire Road Unsealed	OPEN	DRIVE TO PREVAILING CONDITIONS
Besm Road		29	Shire Road Unsealed	CLOSED	CLOSED EACH SIDE OF BUNDILLA CREEK
Yenloora Road		27	Shire Road Unsealed	OPEN	WITH CAUTION
Warri Gate Road Noccundra – Bransby Santos Rd Bransby Santos Rd – NSW Border	186	2	Shire Roads Unsealed	OPEN OPEN	DRIVE TO PREVAILING CONDITIONS 4WD ONLY WITH CAUTION
Innamincka Road Jackson – Naccowlah Naccowlah – Ballera Ballera – Nappamerrie Nappamerrie – SA Border	301	12	Shire Road Sealed Sealed Sealed/ Unsealed	OPEN OPEN	DRIVE TO PREVAILING CONDITIONS



BULLOO SHIRE COUNCIL ROAD CONDITION REPORT

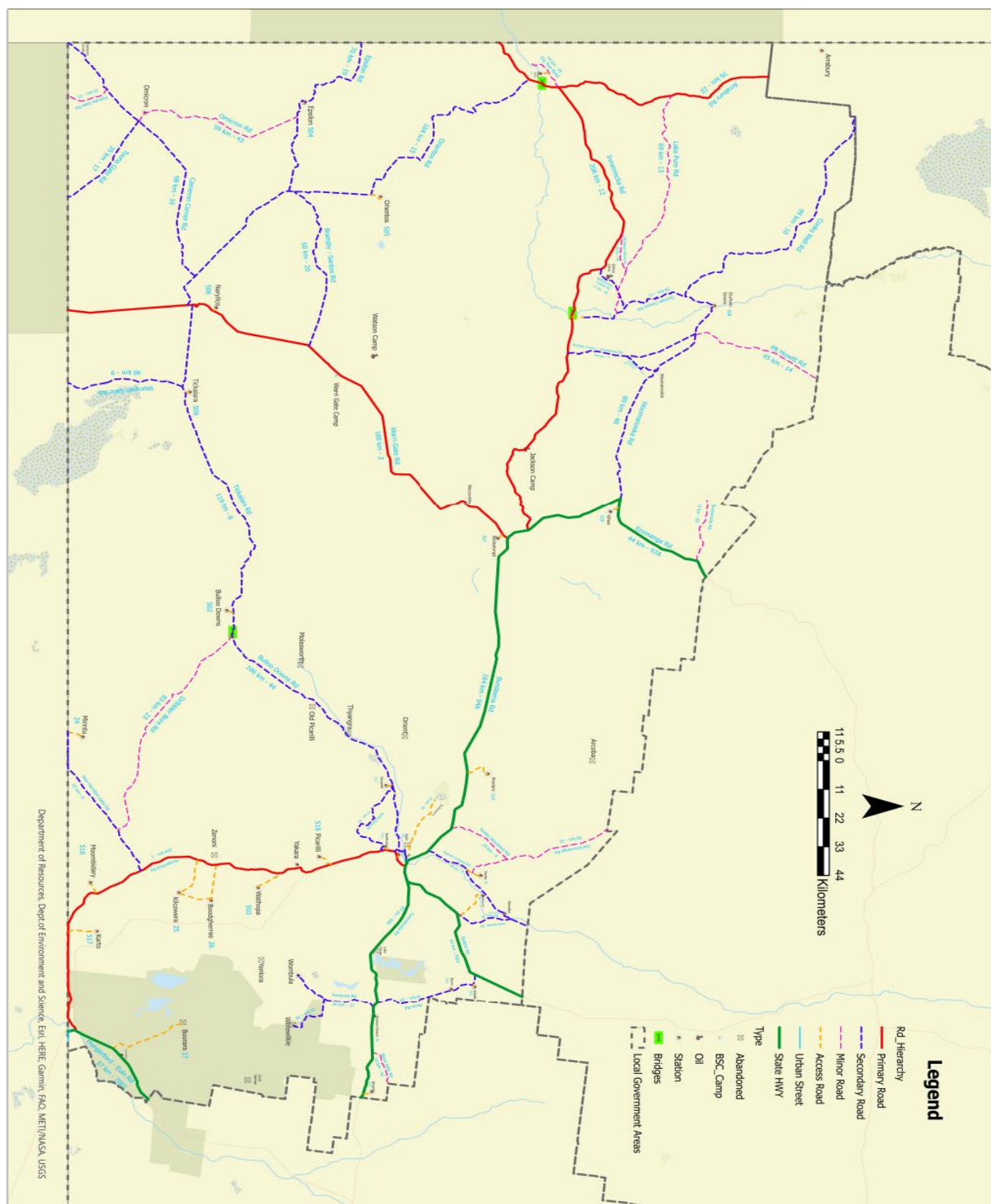
Page 3


As at 7.45am 10/07/2023

Next Update issued when conditions change

Woomanooka Road Bundeena – Woomanooka Woomanooka – Durham Downs	335	48	Shire Road Unsealed	OPEN OPEN	OPEN WITH CAUTION 4WD ONLY WITH CAUTION
Durham Downs Road Ballera - Durham Downs Station Durham Downs Stn -	334	11	Shire Road Sealed/ Unsealed	OPEN	OPEN WITH CAUTION
Cooks Well Road	335	10	Shire Road Unsealed	OPEN	OPEN WITH CAUTION
Orientos Road Nappa Merrie – Orientos Stn Orientos Stn – Cameron Corner Cameron Corner – Warri Gate Rd	335	15	Shire Road Unsealed	CLOSED CLOSED OPEN	DUE TO RAIN DUE TO RAIN OPEN WITH CAUTION
Cameron Corner Road Warry Gate Rd – Omicron Rd Omicron to Cameron Corner	335	16	Shire Road Unsealed	OPEN OPEN	OPEN WITH CAUTION OPEN WITH CAUTION
Omicron Road Omicron – Epsilon	334	43	Shire Road Unsealed	CLOSED	DUE TO RAIN
Toona Gate Road Cameron Corner – Border Gate	334	17	Shire Road Unsealed	CLOSED	DUE TO RAIN
Epsilon / Moomba Road Santos – Epsilon – S A Border	334	19	Shire Road Unsealed	OPEN	DRIVE TO PREVAILING CONDITIONS
Fortville Gate Rd Cameron Corner – Border Gate		21	Shire Road	CLOSED	DUE TO FLOOD DAMAGE
Ballera Access Road	334	30	Shire Road Sealed	OPEN	DRIVE TO PREVAILING CONDITIONS
Dig Tree Road	320	39	Shire Road Unsealed	OPEN	OPEN WITH CAUTION
Arrabury Road (to Barcoo Shire Border)	320	22	Shire Road Unsealed	OPEN	OPEN WITH CAUTION

Note: Definition of Light Vehicles is: Nothing over 5 Tonne, e.g. Car & Trailer; 4 x 4 Caravan.



		BULLOO SHIRE COUNCIL ROAD CONDITION REPORT As at 7.45am 10/07/2023 Next Update issued when conditions change	Page 5